

# AERIAL SPLASHER

0011-1581



See Specification Sheet for product data.



**WATER EFFECT**

SHOWER



**INSTALLATION**

ZERO-DEPTH + WADING POOL

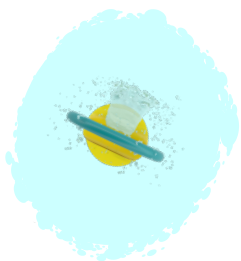


**PLAYPHASE™**

DETACHABLE MOUNTING SYSTEM

## PLAY OPPORTUNITIES:

Water creates a gentle clapping sound as it spins the Aerial Splasher's flipping plate and splashes onto the play pad below. A stunning play feature, the translucent flipper plate creates an eye catching spectacle in the sunlight.



COGNITIVE



SOCIAL



PHYSICAL

Play is fundamental in childhood development, health and wellbeing. Waterplay products are designed using research that supports cognitive, social and emotional, creative and physical growth. The above icons represent the leading attributes associated with this play feature.

## PLAY ZONES:



EXPLORATION



ADVENTURE

**CATEGORY:** Soakers & Spinners

**PRODUCT LINE:** Freestanding Play



1.888.890.6257 (USA & CAN) | +1 (250) 712.3393 (INTL)  
info@waterplay.com | www.waterplay.com

For full product specification details, please refer to the product specification document. Due to our continuing product improvement program, Waterplay reserves the right to change the product specifications without notice. All product designs at all times remain the property of Waterplay or are used under license and cannot be used or reproduced without written permission.